



BROCHURE

ABRGAT0923

EDICIÓN

2023

ABRAZADERAS GATES®





DRIVEN BY POSSIBILITY™





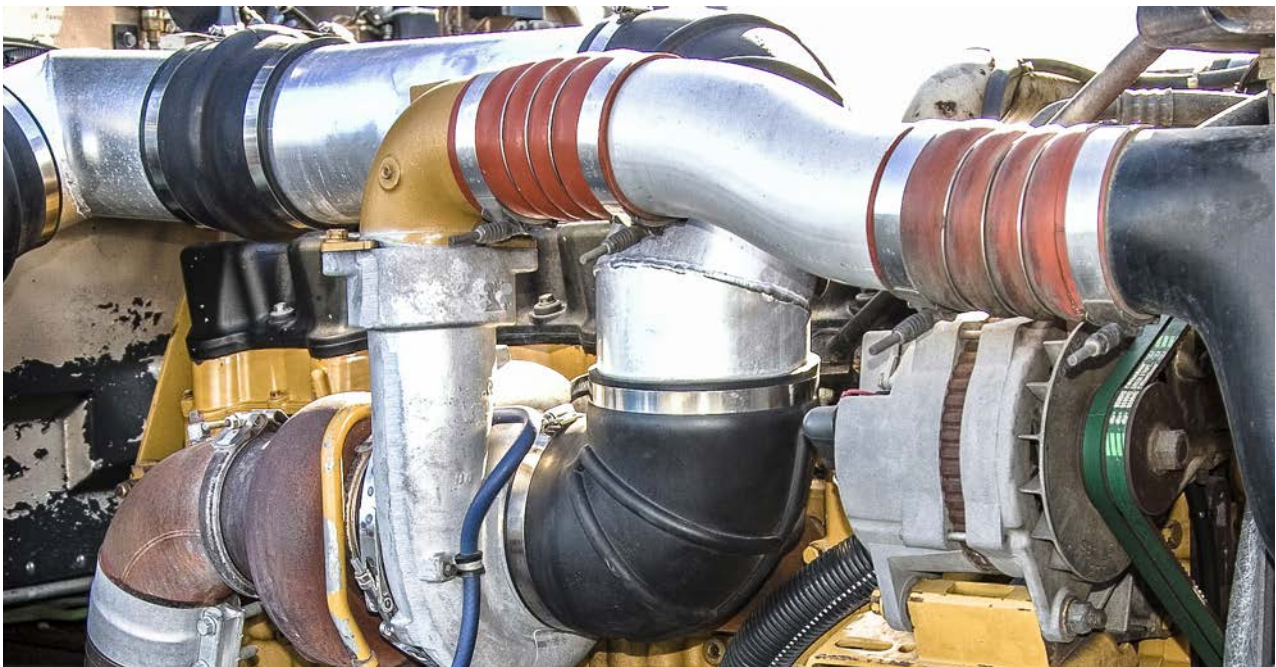
ABRAZADERAS GATES®

| | |
|-------------------------------------|---|
| INTRODUCCIÓN..... | 2 |
| ABRAZADERAS SIN FIN..... | 3 |
| ABRAZADERAS SIN FIN SILVER..... | 4 |
| ABRAZADERAS T-BOLT SIN RESORTE..... | 5 |
| ABRAZADERAS T-BOLT CON RESORTE..... | 6 |

ABRAZADERAS GATES®

Gates te ofrece una amplia gama en abrazaderas tanto para el segmento automotriz ligero y pesado así como para el segmento industrial, disponibles en diferentes aleaciones de acero.

Complementa tus líneas de mangueras automotrices e industriales Gates con el respaldo y calidad de las abrazaderas que ponemos a tu disposición. ¡Siempre con inventarios!



ABRAZADERAS SIN FIN

1. Carcasa: Acero Inoxidable
2. Tornillo: Acero Inoxidable
3. Banda: Acero Inoxidable

APLICACIÓN:

Para uso automotriz e industrial

NORMA:

Serie MM: J1508 Tipo M

Serie H: J1508 Tipo F



SERIE MM

SERIE H

| BANDA | CARCASA | TORNILLO | CÓDIGO | NO. DE PARTE (SERIE) | EMPAQUE PZAS. | RANGO DIÁMETRO INTERIOR | | | |
|--------|---------|----------|--------------|----------------------|---------------|-------------------------|-------------|-------------|-------------|
| | | | | | | MÍN. (INCH) | MÁX. (INCH) | MÍN. (INCH) | MÁX. (INCH) |
| 301 SS | 301 SS | 302 SS | 700075150010 | MM4 Micro | 200 | 7/32 | 5/8 | 0.22 | 0.63 |
| 301 SS | 301 SS | 302 SS | 700075150011 | MM5 Micro | 100 | 1/2 | 29/32 | 0.50 | 0.91 |
| 301 SS | 301 SS | 410 SS | 700075150012 | H6 | 50 | 7/16 | 25/32 | 0.44 | 0.78 |
| 201 SS | 201 SS | 410 SS | 700075150013 | H8 | 50 | 1/2 | 29/32 | 0.50 | 0.91 |
| 201 SS | 201 SS | 410 SS | 700075150014 | H10 | 50 | 9/16 | 1 1/16 | 0.56 | 1.06 |
| 201 SS | 201 SS | 410 SS | 700075150015 | H12 | 25 | 11/16 | 1 1/4 | 0.69 | 1.25 |
| 201 SS | 201 SS | 410 SS | 700075150016 | H16 | 25 | 13/16 | 1 1/2 | 0.81 | 1.50 |
| 201 SS | 201 SS | 410 SS | 700075150017 | H20 | 50 | 13/16 | 1 3/4 | 0.81 | 1.75 |
| 201 SS | 201 SS | 410 SS | 700075150018 | H24 | 50 | 1 1/16 | 2 | 1.06 | 2.00 |
| 201 SS | 201 SS | 410 SS | 700075150019 | H28 | 50 | 1 5/16 | 2 1/4 | 1.31 | 2.25 |
| 201 SS | 201 SS | 410 SS | 700075150020 | H32 | 25 | 1 9/16 | 2 1/2 | 1.56 | 2.50 |
| 201 SS | 201 SS | 410 SS | 700075150021 | H36 | 25 | 1 13/16 | 2 3/4 | 1.81 | 2.75 |
| 201 SS | 201 SS | 410 SS | 700075150050 | H40 | 25 | 2 1/16 | 3 | 2.06 | 3.00 |
| 201 SS | 201 SS | 410 SS | 700075150051 | H44 | 25 | 2 5/16 | 3 1/4 | 2.31 | 3.25 |
| 201 SS | 201 SS | 410 SS | 700075150052 | H48 | 25 | 2 9/16 | 3 1/2 | 2.56 | 3.50 |
| 201 SS | 201 SS | 410 SS | 700075150053 | H52 | 25 | 2 13/16 | 3 3/4 | 2.81 | 3.75 |
| 201 SS | 201 SS | 410 SS | 700075150054 | H60 | 20 | 3 5/16 | 4 1/4 | 3.31 | 4.25 |
| 201 SS | 201 SS | 410 SS | 700075150055 | H72 | 20 | 1 7/8 | 5 | 1.88 | 5.00 |
| 201 SS | 201 SS | 410 SS | 700075150072 | H80 | Granel | 2 1/2 | 5 1/2 | 2.50 | 5.50 |
| 201 SS | 201 SS | 410 SS | 700075150056 | H88 | Granel | 3 1/8 | 6 | 3.13 | 6.00 |
| 201 SS | 201 SS | 410 SS | 700075150057 | H96 | Granel | 3 5/8 | 6 1/2 | 3.63 | 6.50 |
| 201 SS | 201 SS | 410 SS | 700075150058 | H104 | Granel | 4 1/8 | 7 | 4.13 | 7.00 |
| 301 SS | 301 SS | 410 SS | 75150076 | H128 | Granel | 5 11/16 | 8 1/2 | 5.69 | 8.50 |



ABRAZADERAS SIN FIN SILVER

1. Carcasa: Acero Inoxidable
2. Tornillo: Acero al Carbón (AC)
3. Banda: Acero Inoxidable

APLICACIÓN:

Para uso automotriz e industrial

NORMA:

Serie MP: SAE J1508 Tipo M

Serie HP: SAE J1508 Tipo F



SERIE MP

SERIE HP

| BANDA | CARCASA | TORNILLO | CÓDIGO | NO. DE PARTE (SERIE) | EMPAQUE PZAS. | RANGO DIÁMETRO INTERIOR | | | |
|--------|---------|----------|--------------|----------------------|---------------|-------------------------|-------------|-------------|-------------|
| | | | | | | MÍN. (INCH) | MÁX. (INCH) | MÍN. (INCH) | MÁX. (INCH) |
| 301 SS | 301 SS | AC | 700075150069 | MP4 Micro | 200 | 7/32 | 5/8 | 0.22 | 0.63 |
| 301 SS | 301 SS | AC | 700075150070 | MP5 Micro | 100 | 1/2 | 29/32 | 0.50 | 0.91 |
| 201 SS | 201 SS | AC | 700075150059 | HP10 | 50 | 9/16 | 1 1/16 | 0.56 | 1.06 |
| 201 SS | 201 SS | AC | 700075150060 | HP12 | 50 | 11/16 | 1 1/4 | 0.69 | 1.25 |
| 201 SS | 201 SS | AC | 700075150061 | HP16 | 50 | 13/16 | 1 1/2 | 0.81 | 1.50 |
| 201 SS | 201 SS | AC | 700075150062 | HP20 | 50 | 13/16 | 1 3/4 | 0.81 | 1.75 |
| 201 SS | 201 SS | AC | 700075150063 | HP24 | 50 | 1 1/16 | 2 | 1.06 | 2.00 |
| 201 SS | 201 SS | AC | 700075150064 | HP28 | 50 | 1 5/16 | 2 1/4 | 1.31 | 2.25 |
| 201 SS | 201 SS | AC | 700075150065 | HP32 | 25 | 1 9/16 | 2 1/2 | 1.56 | 2.50 |
| 201 SS | 201 SS | AC | 700075150066 | HP36 | 25 | 1 13/16 | 2 3/4 | 1.81 | 2.75 |

ABRAZADERAS T-BOLT SIN RESORTE

1. Tornillo y tuerca: Acero al Carbón (AC)
2. Soporte: Acero Inoxidable
3. Banda: Acero Inoxidable
4. Ancho de Banda: 3/4"

APLICACIÓN:

Para uso automotriz de equipo pesado.
Mangueras de silicón para turbocargador y sistema de enfriamiento.

NORMA:

SAE J1508 Tipo TB



| BANDA | SOPORTE | TORNILLO | CÓDIGO | NO. DE PARTE (SERIE) | EMPAQUE PZAS. | RANGO DIÁMETRO INTERIOR | | | |
|--------|---------|----------|--------------|----------------------|---------------|-------------------------|-------------|-------------|-------------|
| | | | | | | MÍN. (INCH) | MÁX. (INCH) | MÍN. (INCH) | MÁX. (INCH) |
| 301 SS | 301 SS | AC | 700075150206 | TB206 | Granel | 1 7/8 | 2 3/16 | 1.88 | 2.19 |
| 301 SS | 301 SS | AC | 700075150221 | TB221 | Granel | 2 | 2 5/16 | 2.00 | 2.31 |
| 301 SS | 301 SS | AC | 700075150259 | TB259 | Granel | 2 1/4 | 2 9/16 | 2.25 | 2.56 |
| 301 SS | 301 SS | AC | 700075150265 | TB265 | Granel | 2 3/8 | 2 11/16 | 2.38 | 2.69 |
| 301 SS | 301 SS | AC | 700075150284 | TB284 | Granel | 2 1/2 | 2 13/16 | 2.50 | 2.81 |
| 301 SS | 301 SS | AC | 700075150309 | TB309 | Granel | 2 3/4 | 3 1/6 | 2.75 | 3.17 |
| 301 SS | 301 SS | AC | 700075150321 | TB321 | Granel | 2 7/8 | 3 3/16 | 2.88 | 3.19 |
| 301 SS | 301 SS | AC | 700075150359 | TB359 | Granel | 3 1/4 | 3 9/16 | 3.25 | 3.56 |
| 301 SS | 301 SS | AC | 700075150387 | TB387 | Granel | 3 9/16 | 3 7/8 | 3.56 | 3.88 |
| 301 SS | 301 SS | AC | 700075150409 | TB409 | Granel | 3 3/4 | 4 1/16 | 3.75 | 4.06 |
| 301 SS | 301 SS | AC | 700075150434 | TB434 | Granel | 4 1/16 | 4 3/8 | 4.06 | 4.38 |
| 301 SS | 301 SS | AC | 700075150459 | TB459 | Granel | 4 1/4 | 4 9/16 | 4.25 | 4.56 |
| 301 SS | 301 SS | AC | 700075150487 | TB487 | Granel | 4 9/16 | 4 7/8 | 4.56 | 4.88 |
| 301 SS | 301 SS | AC | 700075150509 | TB509 | Granel | 4 3/4 | 5 1/16 | 4.75 | 5.06 |
| 301 SS | 301 SS | AC | 700075150537 | TB537 | Granel | 5 | 5 5/16 | 5.00 | 5.31 |
| 301 SS | 301 SS | AC | 700075150562 | TB562 | Granel | 5 1/4 | 5 9/16 | 5.25 | 5.56 |
| 301 SS | 301 SS | AC | 700075150587 | TB587 | Granel | 5 1/2 | 5 13/16 | 5.50 | 5.81 |
| 301 SS | 301 SS | AC | 700075150609 | TB609 | Granel | 5 3/4 | 6 1/16 | 5.75 | 6.06 |
| 301 SS | 301 SS | AC | 700075150637 | TB637 | Granel | 6 | 6 5/16 | 6.00 | 6.31 |
| 301 SS | 301 SS | AC | 700075150659 | TB659 | Granel | 6 1/4 | 6 9/16 | 6.25 | 6.56 |
| 301 SS | 301 SS | AC | 700075150709 | TB709 | Granel | 6 3/4 | 7 1/16 | 6.75 | 7.06 |
| 301 SS | 301 SS | AC | 700075150762 | TB762 | Granel | 7 1/4 | 7 9/16 | 7.25 | 7.56 |

ABRAZADERAS T-BOLT CON RESORTE

1. Tornillo: Acero al Carbón (AC)
2. Soporte: Acero Inoxidable
3. Banda: Acero Inoxidable
4. Ancho de Banda: 3/4"

APLICACIÓN:

Para uso automotriz de equipo pesado
Mangueras de silicón para turbocargador y sistema de enfriamiento

NORMA:

Serie TBLS: SAE J1508 Tipo SLTB
TBL132: SAE J1508 Tipo SLF & SLHD

*TBL132:

5. Tornillo: Acero al Carbón (AC)
6. Banda: Acero Inoxidable



| BANDA | SOPORTE | TORNILLO Y TUERCA | CÓDIGO | NO. DE PARTE (SERIE) | EMPAQUE PZAS. | RANGO DIÁMETRO INTERIOR | | | |
|--------|---------|-------------------|--------------|----------------------|---------------|-------------------------|-------------|-------------|-------------|
| | | | | | | MÍN. (INCH) | MÁX. (INCH) | MÍN. (INCH) | MÁX. (INCH) |
| 301 SS | 301 SS | AC | 700075151132 | *TBL132 | Granel | 1 | 1 3/4 | 1.00 | 1.75 |
| 301 SS | 301 SS | AC | 700075151212 | TBLS212 | Granel | 1 13/16 | 2 1/8 | 1.81 | 2.13 |
| 301 SS | 301 SS | AC | 700075151236 | TBLS236 | Granel | 2 1/8 | 2 7/16 | 2.13 | 2.44 |
| 301 SS | 301 SS | AC | 700075151255 | TBLS255 | Granel | 2 1/4 | 2 9/16 | 2.25 | 2.56 |
| 301 SS | 301 SS | AC | 700075151286 | TBLS286 | Granel | 2 5/8 | 2 15/16 | 2.63 | 3.00 |
| 301 SS | 301 SS | AC | 700075151308 | TBLS308 | Granel | 2 3/5 | 3 1/16 | 2.60 | 3.06 |
| 301 SS | 301 SS | AC | 700075151333 | TBLS333 | Granel | 3 1/16 | 3 3/8 | 3.06 | 3.38 |
| 301 SS | 301 SS | AC | 700075151352 | TBLS352 | Granel | 3 1/4 | 3 9/16 | 3.25 | 3.56 |
| 301 SS | 301 SS | AC | 700075151383 | TBLS383 | Granel | 3 9/16 | 3 7/8 | 3.56 | 3.88 |
| 301 SS | 301 SS | AC | 700075151408 | TBLS408 | Granel | 3 3/4 | 4 1/16 | 3.75 | 4.06 |
| 301 SS | 301 SS | AC | 700075151433 | TBLS433 | Granel | 4 1/32 | 4 1/3 | 4.03 | 4.33 |
| 301 SS | 301 SS | AC | 700075151436 | TBLS436 | Granel | 4 1/16 | 4 3/8 | 4.06 | 4.38 |
| 301 SS | 301 SS | AC | 700075151458 | TBLS458 | Granel | 4 1/4 | 4 9/16 | 4.25 | 4.56 |
| 301 SS | 301 SS | AC | 700075151483 | TBLS483 | Granel | 4 1/2 | 4 13/16 | 4.50 | 4.81 |
| 301 SS | 301 SS | AC | 700075151508 | TBLS508 | Granel | 4 9/16 | 4 7/8 | 4.56 | 4.88 |
| 301 SS | 301 SS | AC | 700075151533 | TBLS533 | Granel | 5 | 5 5/16 | 5.00 | 5.31 |
| 301 SS | 301 SS | AC | 700075151558 | TBLS558 | Granel | 5 1/4 | 5 9/16 | 5.25 | 5.56 |
| 301 SS | 301 SS | AC | 700075151570 | TBLS570 | Granel | 5 1/2 | 5 13/16 | 5.50 | 5.81 |
| 301 SS | 301 SS | AC | 700075151608 | TBLS608 | Granel | 5 3/4 | 6 1/16 | 5.75 | 6.06 |
| 301 SS | 301 SS | AC | 700075151633 | TBLS633 | Granel | 6 1/16 | 6 3/8 | 6.06 | 6.38 |
| 301 SS | 301 SS | AC | 700075151655 | TBLS655 | Granel | 6 1/4 | 6 9/16 | 6.25 | 6.56 |
| 301 SS | 301 SS | AC | 700075151668 | TBLS668 | Granel | 6 1/2 | 6 13/16 | 6.50 | 6.81 |
| 301 SS | 301 SS | AC | 700075151708 | TBLS708 | Granel | 7 | 7 5/16 | 7.00 | 7.13 |
| 301 SS | 301 SS | AC | 700075151758 | TBLS758 | Granel | 7 1/4 | 7 9/16 | 7.25 | 7.56 |



DRIVEN BY POSSIBILITY™





DRIVEN BY POSSIBILITY™

GATES DE MÉXICO S. DE R. L. DE C. V.

AV. VASCO DE QUIROGA 3200, PISO 1, CENTRO CIUDAD SANTA FE, C.P. 01210, CDMX.
TEL. 55 2000 2700

**CENTRO DE DISTRIBUCIÓN Y SERVICIO VESTA PARK
TOLUCA II**

ISIDRO FABELA NO. 120 EDIFICIO INDUSTRIAL S-6
SAN BLAS OTZACATIPAN, C.P. 50230 TOLUCA, MÉXICO.
TEL. 722 265 5300

**CENTRO DE DISTRIBUCIÓN Y SERVICIO
GUADALAJARA**

CARRETERA A SAN MARTÍN DE LAS FLORES NO. 520
PARQUE INDUSTRIAL PROLOGIS NAVE 2-B, C.P. 45629, TLAQUEPAQUE, JAL.
TEL. 33 3001 8200

CENTRO DE DISTRIBUCIÓN Y SERVICIO MONTERREY

BLVD. JOSÉ LÓPEZ PORTILLO NO.333 INT. BODEGAS 209
COL. VALLE DEL CANADÁ, C.P. 66050, GENERAL ESCOBEDO, N.L.
TEL. 81 8852 8000

LA INFORMACIÓN CONTENIDA EN ESTE CATÁLOGO TÉCNICO ES LA CORRECTA HASTA EL MOMENTO DE SU IMPRESIÓN Y ESTÁ SUJETA A CAMBIOS SIN PREVIO AVISO; POR LO CUAL NO ASUMIMOS RESPONSABILIDAD ALGUNA POR SUS ERRORES U OMISIONES. QUEDA EXPRESAMENTE PROHIBIDA LA REPRODUCCIÓN TOTAL O PARCIAL DE ESTE MATERIAL, SIN EL PERMISO EXPRESO Y POR ESCRITO DE GATES DE MÉXICO S.A. DE C.V. LA DISTRIBUCIÓN DE ESTE CATÁLOGO TÉCNICO ES GRATUITA.

**PARA MAYOR INFORMACIÓN FAVOR DE CONTACTAR
A TU REPRESENTANTE DE VENTAS GATES®.**